

2025 STMA Invitational Cross Country Meet

Wednesday, October 1st at St. Michael Rec. Center

Teams attending: Andover, Armstrong, Big Lake, Blaine, Buffalo, Camden, Eden Prairie, Edina (B), Farmington, Forest Lake, Maple Grove, Monticello, Northfield (G), Robbinsdale Cooper, St. Cloud Tech, STMA, and Wayzata (B)

Schedule:

2:45	7th/8th Grade Girls <u>ONLY</u> (3000 m)	Ribbons 1-25	All awards will be placed in an envelope for coaches to pick up at the awards table, located under the pavilion, once the next race has started.
3:05	7th/8th Grade Boys <u>ONLY</u> (3000 m)	Ribbons 1-25	
3:30	JV Girls (5000 m)	Ribbons 1-25	
4:05	JV Boys (5000 m)	Ribbons 1-25	
4:35	Varsity Girls (5000 m)	Ribbons 1-25, Shirts 1-15	
5:05	Varsity Boys (5000 m)	Ribbons 1-25, Shirts 1-15	

Location:

[St. Michael Rec. Center](#)

3150 Lander Ave. NE

St. Michael MN 55376

Varsity Lineups: Varsity races will be allowed a maximum of **10 runners**. JV and middle school races are unlimited.

Entry Fee: **\$300.00 (\$150 per gender)** per school to:

Keith Cornell (Activities Director)

St. Michael-Albertville High School

5800 Jamison Ave. NE

St. Michael, MN 55376

A team that wants to be in the meet, but not run a varsity team, may enter runners in the non-varsity races for \$20.00 entry fee per non-varsity race.

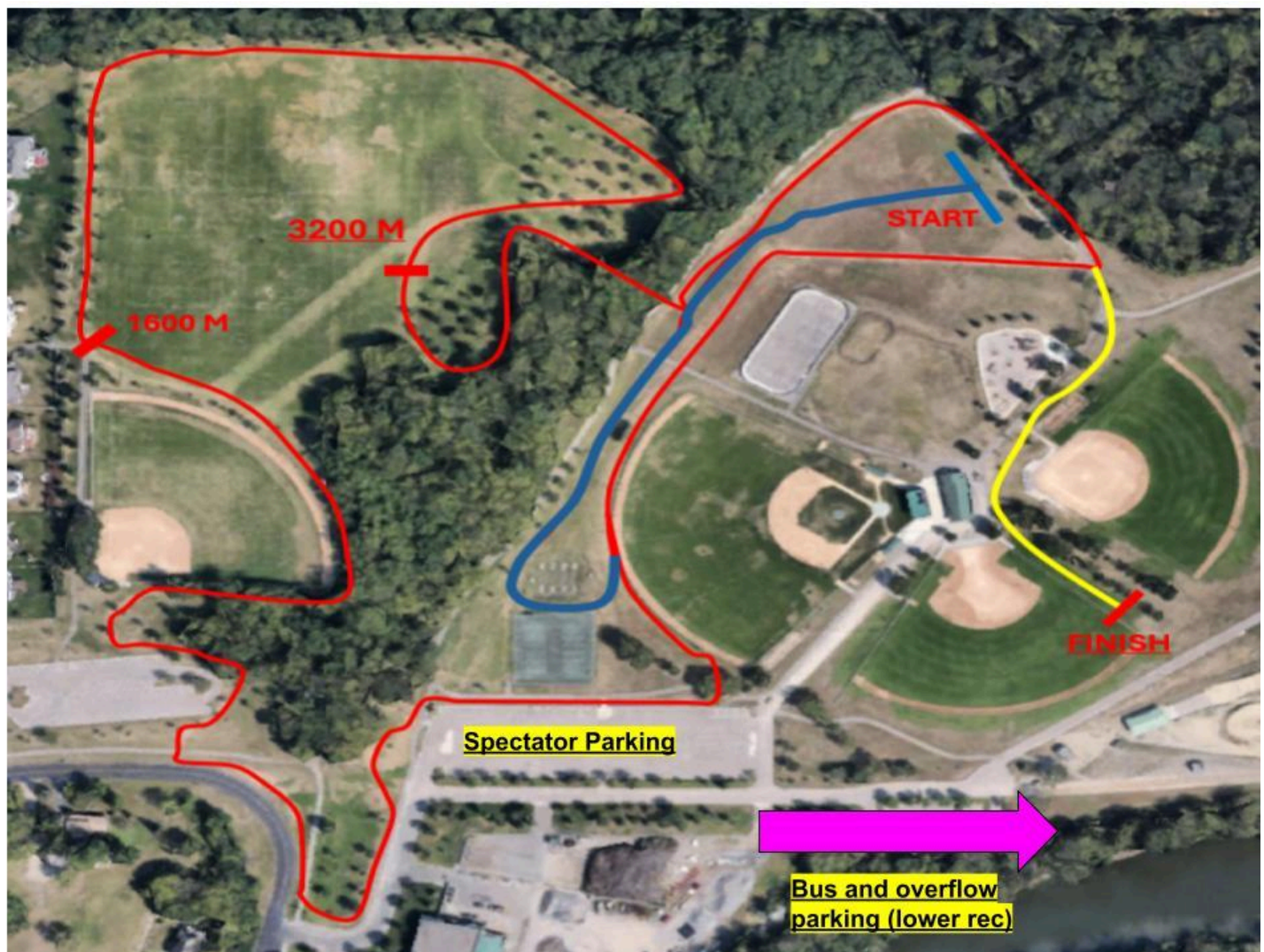
Timing: Chip timing will be through www.gopherstateevents.com

Parking: Busses will be directed to drop off near the starting line/team camps but will park at the lower rec (youth soccer fields during the meet).

Contact: [Heather Strait-STMA Girls CC coach \(612-670-8330-cell\)](mailto:heatherst@mystma.org)
heatherst@mystma.org

[Chase Cayo-STMA Boys CC coach \(612-385-1515-cell\)](mailto:chaseca@mystma.org)
chaseca@mystma.org

***High School Course is two red laps for 5k**



Middle School Course (3k) → One loop of the 5k course then to the finish.

Box Assignments:

1	Wayzata (B)/ Northfield (G)	9	Robbinsdale Cooper
2	Camden	10	Maple Grove
3	Blaine	11	Big Lake
4	St. Cloud Tech	12	STMA
5	Armstrong	13	Forest Lake
6	Edina (B)	14	Andover
7	Farmington	15	Monticello
8	Eden Prairie	16	Buffalo