

Park Region Conference

Tuesday October 15th, 2024

Location: Double Eagle Golf & Grill

31886 Co. Rd 3 Eagle Bend, MN (5 miles South of Eagle Bend)

Teams: Alexandria Community Christian School, Parkers Prairie, Bertha-Hewitt, Pillager, Ashby-Brandon-Evansville, Pine River-Backus, Ottertail Central, New York Mills, Wadena-Deer Creek, Long Prairie-Grey Eagle, United North Central, Verndale.

Meet Schedule:

4:00 JH Girls/JH Boys 3200 meters (Big Loop with Add on)

4:30 JV/Varsity Girls 5000 meters (Two Big Loops)

5:15 JV/Varsity Boys 5000 meters (Two Big Loops)

Awards: Team trophy for conference champion for boys' and girls' varsity. All-Conference plaques for top 15 in Varsity races. 15-20 ribbons awarded for honorable mention. 7 medals for both boys and girls with neck ribbons for first place teams. 10 ribbons for both boys and girls for JV places 1-10. 10 ribbons for both boys and girls for junior high for places 1-10. 1 plaque for girls coach of the year and one for boys coach of the year.

Course: The course is well-marked and relatively flat. Paint will mark the course. Ensure your runners stay within 6 feet of the white line/directional flags. Please make sure your athletes go on the outside of each directional corner flag. Course Maps are in this packet and will be available at the meet.

Lane Assignments: 1 PILL 2 VERN 3 PR-B 4 LP-GE 5 UNC 6 B-H 7 W-DC 8 NYM
9 A-B-E 10 OTC 11 PP 12 ACC

Bathrooms: No locker rooms will be available so runners should arrive in uniform. Porta potties will be available. NO ONE IN THE CLUBHOUSE. Thank you.

Medical: A trainer from Astera Health will be on hand but please have your MSHSL Emergency Action Plan Reviewed prior to the meet.

Scoring: Gopher State Events (<https://gsetiming.com>) will be doing the timing & scoring, with results posted on their website and Athletic.net. Athletes will be issued bibs & pins prior to the start of the meet. Registration can be done on Athletic.net.

Parking: See the map for reference. Bus parking and spectator overflow will be located south of the golf course. Look for the signs on the West side of the road. Short walk to the golf course.

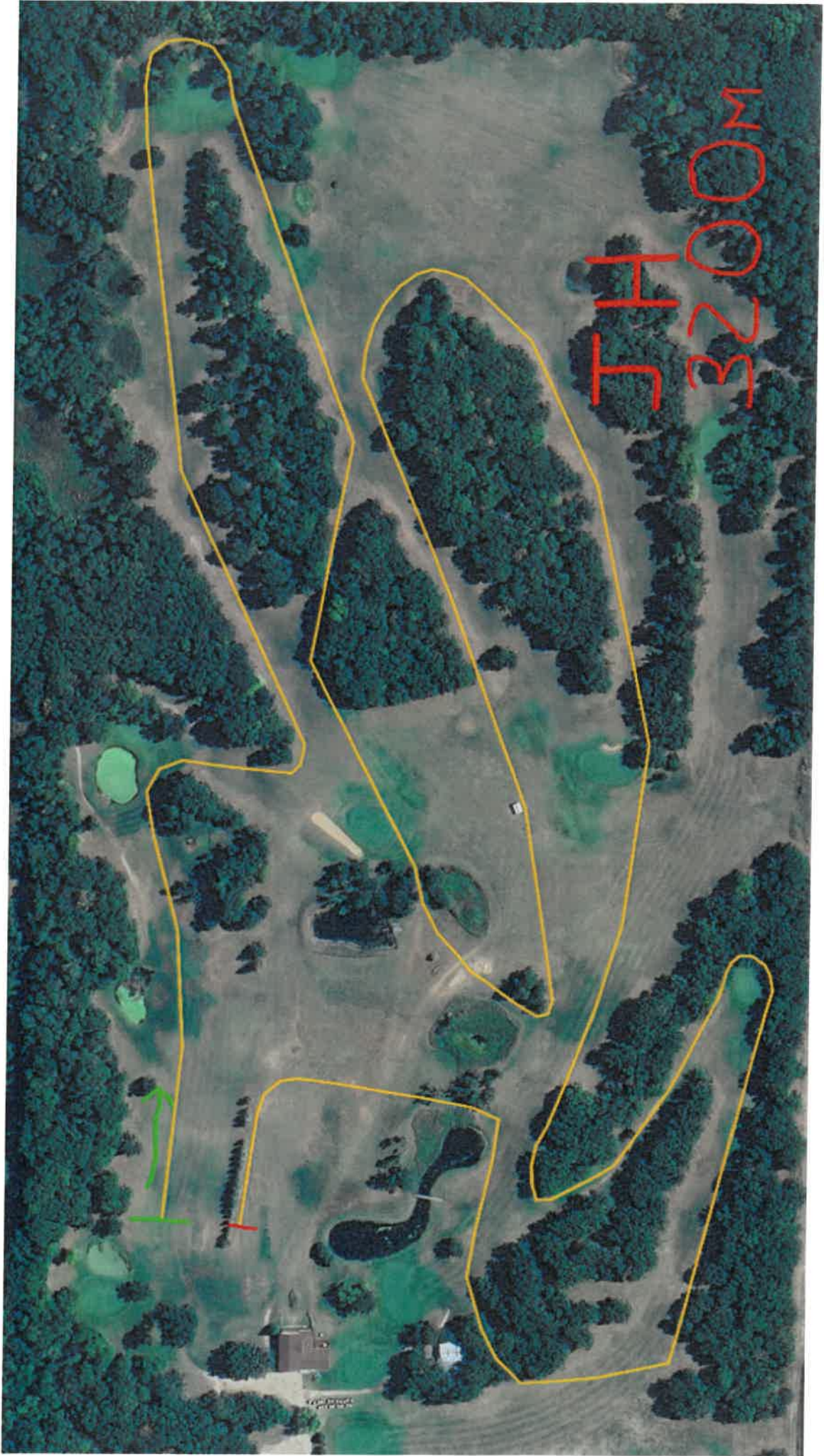
Clubhouse: No athletes are allowed in the clubhouse.

Concessions: There will be NO concessions for this meet.

Coaches: We are looking to have a fun, streamlined event that you and your athletes will enjoy. Please bring your own safety pins to attach your athletes' bibs to their uniforms.

Contacts: David Mills: Athletic Director 218.924.2500; David.Mills@isd786.org

Kenny Miller - Head Cross Country Coach 218.255.3121; Kenny.Miller@isd786.org



5TH HOLE
3200M

Handwritten green and red lines and arrows pointing towards the clubhouse area.

Small text at the bottom of the image, possibly a copyright notice or scale.



Varsity
5K
2 Laps





Imagery ©2024 Airbus, Imagery ©2024 Airbus, CNES / Airbus, Maxar Technologies, USDA/FPAC/GEO, Map data ©2024 200 ft

Bus Parking and Overflow Parking for spectators is located SW of the golf course. The approach/entrance for this parking is about 200 yards south of the golf course entrance.

The designated area for team camps is located north of the starting line and outlined in red on this map.